

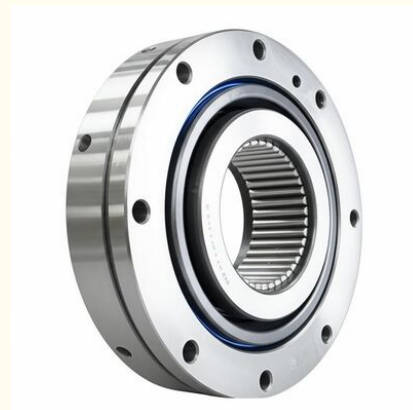


Single Row Slewing Bearing Sealed Type Suitable for Heavy Duty Rotating Equipment and Industrial Machinery Applications

Our Product Introduction

Basic Information

- Place of Origin: CHINA
- Brand Name: ZHUOLI
- Certification: ISO9001
- Model Number: RKS. 062.20.0414



Product Specification

- Application: Slewing
- Warranty: 1 Year
- Lubrication: Grease
- Operating Temperature: -40°C To 80°C
- Material: Steel
- Rotational Speed: High
- Sealing: Sealed
- Trademark: Neutral/OEM/According To Customized
- Highlight: **Single row slewing bearing sealed type ,
Heavy duty slewing bearing for machinery ,
Industrial slewing bearing with sealed design**

For more products please visit us on bearingslewingring.com

Product Description

Product Description:

The Single Row Slewing Bearing is a highly reliable and robust component designed to meet the demanding requirements of various heavy-duty applications. Crafted from premium steel, this bearing ensures exceptional strength and durability, making it an ideal choice for industries that require superior performance under high-load conditions. One of the standout features of this product is its high load capacity, allowing it to support substantial axial, radial, and moment loads efficiently. This makes the Single Row Slewing Bearing particularly suitable for critical machinery such as excavators, cranes, and wind turbines.

When it comes to rotational speed, this slewing bearing excels by providing smooth and efficient operation at high speeds. Its advanced design minimizes friction and wear, contributing to an extended service life and enhanced operational efficiency. This characteristic makes it a preferred option over other types like the Double Row Cylindrical Roller Bearing, especially in applications where maintaining high rotational speed without compromising stability is crucial.

Corrosion resistance is another vital attribute of the Single Row Slewing Bearing. Constructed from corrosion-resistant steel, the bearing is well-equipped to withstand harsh environmental conditions, including exposure to moisture, chemicals, and varying temperatures. This resilience ensures that the bearing maintains its structural integrity and performance over time, reducing maintenance costs and downtime. Such corrosion resistance is essential for outdoor applications, including those involving Excavator Slewing Bearings, where exposure to elements is inevitable.

One of the common applications of the Single Row Slewing Bearing is in the role of a Center Driveshaft Support Bearing. In this capacity, it provides critical support and stability to the driveshaft, ensuring smooth transmission of power and torque. Its robust construction and high load capacity enable it to handle the dynamic forces encountered in driveshaft systems, contributing to the overall reliability and efficiency of the machinery.

In addition to its mechanical advantages, the Single Row Slewing Bearing comes with a 1-year warranty, reflecting the manufacturer's confidence in its quality and durability. This warranty provides customers with peace of mind, knowing that any defects or issues within the warranty period will be addressed promptly. It also underscores the product's suitability for demanding industrial applications where reliability is paramount.

Compared to the Double Row Cylindrical Roller Bearing, the Single Row Slewing Bearing offers a more compact solution without sacrificing load capacity or performance. Its streamlined design facilitates easier installation and integration into existing machinery frameworks. This makes it a versatile option for engineers and designers looking to optimize space without compromising on the bearing's operational capabilities.

Overall, the Single Row Slewing Bearing is a top-tier choice for industries requiring a combination of high load capacity, corrosion resistance, and high rotational speed. Whether used as an Excavator Slewing Bearing, a Center Driveshaft Support Bearing, or in other heavy machinery applications, it consistently delivers outstanding performance and reliability. Its steel construction, coupled with advanced engineering, ensures that it can withstand the rigors of heavy industrial use while maintaining smooth and efficient operation. For businesses seeking a dependable bearing solution with guaranteed quality and performance, the Single Row Slewing Bearing stands out as a superior product. Its comprehensive features and robust design make it an essential component in the pursuit of operational excellence and long-term durability across various industrial sectors.

Technical Parameters:

Lubrication	Grease
Mounting Type	Bolted
Type	Single Row
Sealing	Sealed
Trademark	Neutral/OEM/According To Customized
Application	Slewing
Precision	High
Warranty	1 Year
Size	Customizable
Material	Steel

Applications:

The ZHUOLI Single Row Slewing Bearing, model number RKS. 062.20.0414, is a high-quality product originating from China and certified by ISO9001. Designed with precision and durability in mind, this slewing bearing is an essential component in various industrial and mechanical applications. Its sealed structure and grease lubrication ensure long-lasting performance while providing excellent corrosion resistance, making it suitable for use in harsh environments.

This slewing bearing is widely used in the construction and heavy machinery industries, particularly as an Excavator Slewing Bearing. Excavators rely heavily on robust and reliable bearings to enable smooth rotational movement of the boom and cabin. The ZHUOLI single row slewing bearing delivers exceptional load capacity and stability, ensuring that excavators can operate efficiently and safely even under heavy loads and demanding conditions.

Additionally, the ZHUOLI bearing is commonly employed as a Drive Shaft Center Bearing in automotive and industrial drive systems. Its ability to withstand radial and axial loads while maintaining precise alignment makes it a perfect choice for drive shaft applications. The sealed design prevents contamination and retains lubrication, thereby reducing maintenance frequency and extending service life. This is particularly important for drive shaft center bearings, which play a critical role in minimizing vibration and ensuring smooth power transmission.

Beyond excavators and drive shafts, the single row slewing bearing is also versatile enough to be used in various other machinery such

as cranes, wind turbines, and rotating platforms. Its corrosion-resistant properties make it ideal for outdoor and marine applications where environmental exposure is a concern. With a warranty of 1 year, ZHUOLI guarantees the reliability and performance of this bearing under rigorous operational scenarios.

In summary, the ZHUOLI RKS. 062.20.0414 single row slewing bearing is an indispensable component in numerous application occasions, including Excavator Slewing Bearing roles and Drive Shaft Center Bearing functions. Its robust construction, sealed lubrication system, and certified quality ensure that it performs reliably across a wide range of industrial and mechanical scenarios.

Customization:

ZHUOLI offers premium Single Row Slewing Bearings under the model number RKS. 062.20.0414, proudly made in CHINA with ISO9001 certification. Our slewing bearings are designed for high rotational speed and high load capacity, ensuring optimal performance in demanding applications. We provide customizable sizes to meet your specific requirements, and our products come with sealed sealing to guarantee durability and reliability. Whether you need a neutral, OEM, or fully customized trademark, ZHUOLI can accommodate your branding needs. Ideal for use as a Drive Shaft Center Bearing, Center Driveshaft Support Bearing, or Drive Shaft Center Bearing, our slewing bearings deliver exceptional support and longevity for your drive shaft systems.

Support and Services:

Our Single Row Slewing Bearings are designed to provide reliable rotational support in various industrial applications. To ensure optimal performance and longevity of your slewing bearing, we offer comprehensive technical support and services.

Technical support includes assistance with product selection, installation guidance, and troubleshooting advice. Our team of experts is available to help you identify the right bearing type and size for your specific application, ensuring compatibility and efficiency.

We provide detailed installation instructions to guarantee proper mounting and alignment, which are critical for the bearing's performance. In addition, we offer maintenance recommendations to help you maximize the service life of your slewing bearing, including lubrication schedules and inspection procedures.

For any operational issues, our support services include diagnosis and solutions to address common problems such as unusual noise, vibration, or wear. We also offer repair and refurbishment services to restore your slewing bearing to optimal condition when necessary. Our commitment is to support your operations with high-quality products backed by expert service, ensuring your single row slewing bearing performs reliably in demanding environments.



Maanshan Zhuoli Machinery Technology Co., Ltd.



+86-18555801610



sales@maszhuoli.com



bearingslewingring.com

No. 6, North District, Xiangshan Industrial Park, Xiangshan Town, Yushan District, Ma'anshan City