



42CrMo Three Row Roller Slewing Bearing Swing Ring High Precision

Our Product Introduction

Basic Information

- Place of Origin: CHINA
- Brand Name: ZHUOLI
- Certification: ISO9001
- Model Number: 130.32.900
- Minimum Order Quantity: 1 pc
- Packaging Details: Standard Export Packing
- Delivery Time: 15 work days
- Supply Ability: 1000pcs/month



Product Specification

- Material: 50Mn 42CrMo
- Warranty: 1 Year After Customer Receive It
- Trademark: Neutral/OEM/According To Customized
- Delivery Time: 30days
- Highlight: High Precision Three Row Roller Slewing Bearing , 42CrMo Three Row Roller Slewing Bearing , High Precision swing bearings



More Images



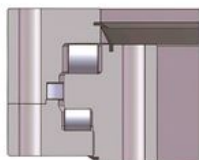
for more products please visit us on bearingslewingring.com

Product Description

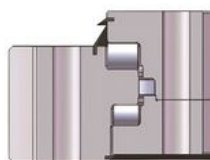
Model NO.	130.32.900	Advantage	Low Noise, Low Vibration, High Precision
Application	Mining, Petroleum, Automatic	Certificate	ISO9001
Delivery Time	30 work days	OEM&ODM	yes
Weight	600kgs	Teeth No	/
Specification	1064*736*182 mm	HS Code	8482800000

三排柱式 Three-row roller

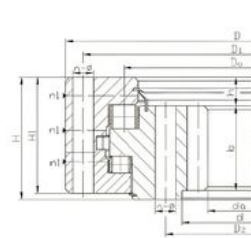
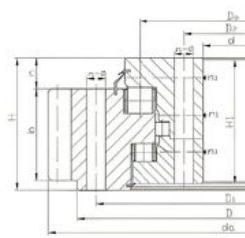
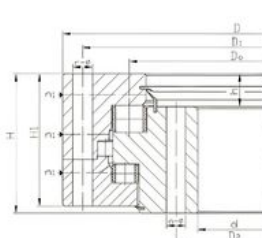
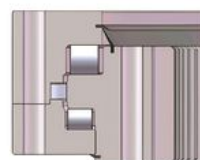
无齿式 No teeth



外齿式 Outer teeth



内齿式 Inner teeth



13系列基本参数 (JB/T2300-1999) Basic data of Standard series 13

序 号 NO.	基本型号 Basic Size			外形尺寸 Configuration Size				安装尺寸 Mounting Size				结构尺寸 Structural Size			齿圈参数 Gear Data			外齿参数 Outer Gear Data			内齿参数 Inner Gear Data			参考 重量 kg Weight
	无齿式 No teeth D _o	外齿式 Outer teeth D _o	内齿式 Inner teeth D _o	D	d	H	D ₁	D ₂	n	通孔 Screw Hole O型 Φ	螺孔 Screw Hole 1,2,3型 Φ T	n ₁	H ₁	h	b	x	m	da	Z	da	Z			
1	130.25.500	131.25.500 132.25.500	133.25.500 134.25.500	634	366	148	598	402	24	18	M16	32	4	138	32	80	+0.5	5	664.8	130	337	68	224	
2	130.25.560	131.25.560 132.25.560	133.25.560 134.25.560	694	426	148	658	462	24	18	M16	32	4	138	32	80	+0.5	5	724.8	142	397.8	80	240	
3	130.25.630	131.25.630 132.25.630	133.25.630 134.25.630	764	496	148	728	532	28	18	M16	32	4	138	32	80	+0.5	6	808.8	132	458.4	77	270	
4	130.25.710	131.25.710 132.25.710	133.25.710 134.25.710	844	576	148	808	612	28	18	M16	32	4	138	32	80	+0.5	8	886.4	145	536.4	90	300	
5	130.32.800	131.32.800 132.32.800	133.32.800 134.32.800	964	636	182	920	680	36	22	M20	40	4	172	40	120	+0.5	8	1006.4	123	595.2	75	500	
6	130.32.900	131.32.900 132.32.900	133.32.900 134.32.900	1064	736	182	1020	780	36	22	M20	40	4	172	40	120	+0.5	8	1102.4	135	691.2	87	600	
7	130.32.1000	131.32.1000 132.32.1000	133.32.1000 134.32.1000	1164	836	182	1120	880	40	22	M20	40	5	172	40	120	+0.5	10	1218	119	784	79	680	
8	130.32.1120	131.32.1120 132.32.1120	133.32.1120 134.32.1120	1284	956	182	1240	1000	40	22	M20	40	5	172	40	120	+0.5	12	1221.6	99	784.8	66	820	
9	130.40.1250	131.40.1250 132.40.1250	133.40.1250 134.40.1250	1445	1055	220	1393	1107	45	26	M24	48	5	210	50	150	+0.5	10	1509.2	123	988.8	83	1200	
10	130.40.1400	131.40.1400 132.40.1400	133.40.1400 134.40.1400	1595	1205	220	1543	1257	45	26	M24	48	5	210	50	150	+0.5	12	1665.6	136	1144.8	96	1300	
11	130.40.1600	131.40.1600 132.40.1600	133.40.1600 134.40.1600	1795	1405	220	1743	1457	48	26	M24	48	6	210	50	150	+0.5	14	1873.2	131	1335.6	84	1520	
12	130.40.1800	131.40.1800 132.40.1800	133.40.1800 134.40.1800	1995	1605	220	1943	1657	48	26	M24	48	6	210	50	150	+0.5	14	2069.2	145	1531.6	96	1750	
13	130.45.2000	131.45.2000 132.45.2000	133.45.2000 134.45.2000	2221	1779	231	2155	1845	60	33	M30	60	6	219	54	160	+0.5	16	2076.8	127	1526.4	96	2400	
14	130.45.2240	131.45.2240 132.45.2240	133.45.2240 134.45.2240	2461	2019	231	2395	2085	60	33	M30	60	6	219	54	160	+0.5	18	2256.8	157	1762.4	121	2700	
15	130.45.2500	131.45.2500 132.45.2500	133.45.2500 134.45.2500	2721	2279	231	2655	2345	72	33	M30	60	8	219	54	160	+0.5	18	2552.4	139	1933.2	108	3000	
16	130.45.2800	131.45.2800 132.45.2800	133.45.2800 134.45.2800	3021	2579	231	2955	2645	72	33	M30	60	8	219	54	160	+0.5	20	2816	138	2188	110	3400	
17	130.50.3150	131.50.3150 132.50.3150	133.50.3150 134.50.3150	3432	2868	270	3342	2958	72	45	M42	84	8	258	65	180	+0.5	20	3536	174	2468	139	5000	
18	130.50.3550	131.50.3550 132.50.3550	133.50.3550 134.50.3550	3832	3268	270	3742	3358	72	45	M42	84	8	258	65	180	+0.5	22	3537.6	158	2758.8	126	5600	
19	130.50.4000	131.50.4000 132.50.4000	133.50.4000 134.50.4000	4282	3718	270	4192	3808	80	45	M42	84	8	258	65	180	+0.5	22	3936	194	3168	159	6400	

2. Company introduction

Ma'anshan Zhuoli Machinery Technology Co., Ltd is a professional manufacturer of slewing bearing, our factory is located in Maanshan, Anhui Province, very close to Shanghai Port, goods can be easily transported all over the world. We could produce 300-2500mm slewing bearings with good quality.

*Professional in researching, developing, producing & marketing high precision bearings for 16 years;

*Many series bearings are on stock; Factory directly provide, most competitive price;

*Advanced CNC equipment, guarantee product accuracy & stability;

*Excellent pre-sale & after sale service. We can go to customers' project site if needed.

*Professional technical & exporting team ensure excellent product design, quotation, delivering, documentation & custom clearance.

3. Product Process

TURNING



GEAR PROCESS



HEAT TREATMENT(HRC 55-62)



DRILLING



ASSEMBLE



PACKING



DELIVERY



FAQ:

1.Q: Are you trading company or manufacturer ?

A: We are professional slewing bearing manufacturer with 20 years' experience.

2.Q: How long is your delivery time?

A: Generally it is 4-5 days if the goods are in stock. Or it is about 30 days if the goods are not in stock. Also it is according to

quantity.

3.Q: Do you provide samples ? is it free or extra ?

A: Yes, we could offer the sample, it is extra.

4.Q: What is your terms of payment ?

A: Payment<=1000USD, 100% in advance. Payment>=1000USD, 30% T/T in advance, balance before shipment.

5.Q: Can you provide special customization according to the working conditions?

A: Sure, we can design and produce the slewing bearings for different working conditions.

6.Q: How about your guarantee?

A: We provide lifelong after-sales technical service.



Maanshan Zhuoli Machinery Technology Co., Ltd.



+86-18555801610



sales@maszhuoli.com



bearingslewingring.com

No. 6, North District, Xiangshan Industrial Park, Xiangshan Town, Yushan District, Ma'anshan City