

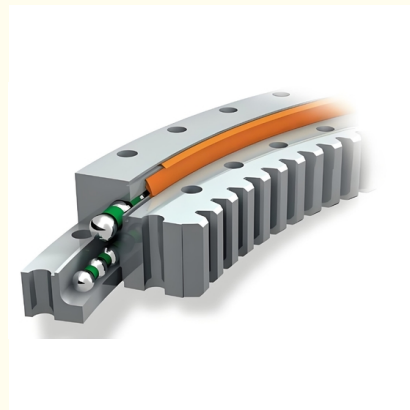


Axial Load Rotary Swing Circle Bearing For PC200-8 Excavator Construction Machinery

Our Product Introduction

Basic Information

- Place of Origin: CHINA
- Brand Name: ZHUOLI
- Certification: ISO9001
- Model Number: VLI 20 0644 N
- Minimum Order Quantity: 1 pc
- Packaging Details: Standard Export Packing
- Delivery Time: 15 work days
- Supply Ability: 1000pcs/month



Product Specification

- Material: 50Mn 42CrMo
- Warranty: 1 Year After Customer Receive It
- Trademark: Neutral/OEM/According To Customized
- Delivery Time: 30days
- Highlight: axial load swing circle bearing ,
PC200-8 swing circle bearing ,
rotary bearing swing pc200 8



More Images



for more products please visit us on bearingslewingring.com

Product Description

Model NO.	VLI 20 0544 N	Advantage	Low Noise, Low Vibration,High Precesion
Application	Mining, Petroleum, Automatic	Certificate	ISO9001
Delivery Time	30 work days	OEM&ODM	yes
Module	6	Teeth No	93
Specification	748*546*56 mm	HS Code	8482800000

2. Company introduction

Ma'anshan Zhuoli Machinery Technology Co., Ltd is a professional manufacturer of slewing bearing, our factory is located in Maanshan, Anhui Province,very close to Shanghai Port, goods can be easily transported all over the world.We could produce 300-2500mm slewing bearings with good quality.

*Professional in researching, developing, producing & marketing high precision bearings for 16 years;

*Many series bearings are on stock; Factory directly provide, most competitive price;

*Advanced CNC equipment, guarantee product accuracy & stability;

*Excellent pre-sale & after sale service. We can go to customers' project site if needed.

*Professional technical & exporting team ensure excellent product design, quotation, delivering, documentation & custom clearance.

3.Product Process

TURNING



GEAR PROCESS



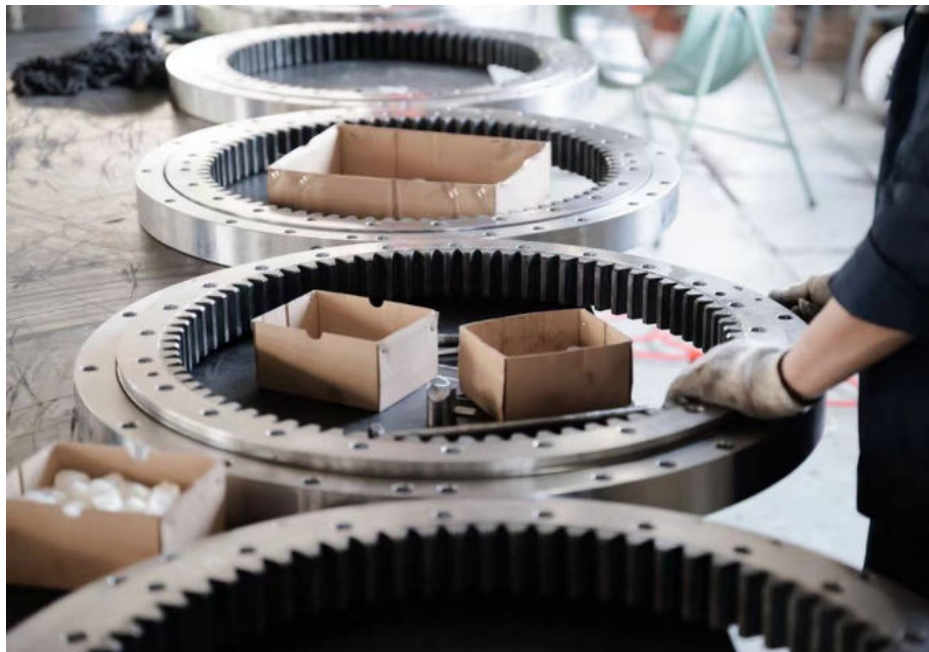
HEAT TREATMENT(HRC 55-62)



DRILLING



ASSEMBLE



PACKING



DELIVERY



FAQ:

1.Q: Are you trading company or manufacturer ?

A: We are professional slewing bearing manufacturer with 20 years' experience.

2.Q: How long is your delivery time?

A: Generally it is 4-5 days if the goods are in stock. Or it is about 30 days if the goods are not in stock. Also it is according to

quantity.

3.Q: Do you provide samples ? is it free or extra ?

A: Yes, we could offer the sample, it is extra.

4.Q: What is your terms of payment ?

A: Payment<=1000USD, 100% in advance. Payment>=1000USD, 30% T/T in advance, balance before shipment.

5.Q: Can you provide special customization according to the working conditions?

A: Sure, we can design and produce the slewing bearings for different working conditions.

6.Q: How about your guarantee?

A: We provide lifelong after-sales technical service.



Maanshan Zhuoli Machinery Technology Co., Ltd.



+86-18555801610



sales@maszhuoli.com



bearingslewingring.com

No. 6, North District, Xiangshan Industrial Park, Xiangshan Town, Yushan District, Ma'anshan City